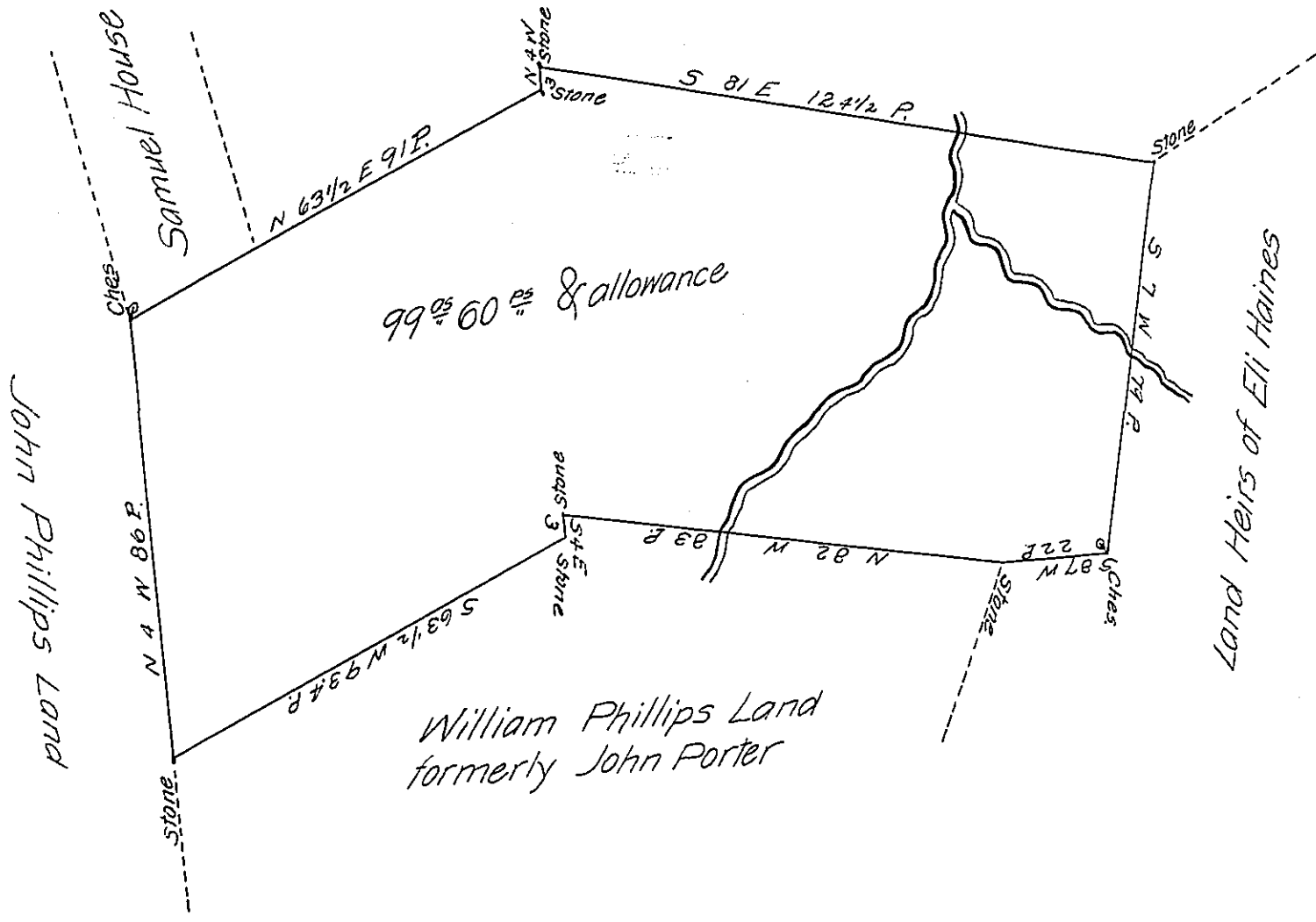


E-88-63

James Clary's Land formerly John Holmes



The above Draught represents a Tract of Land situate in West Nottingham Township Chester County Containing 99 Acres & 60 perches and Allowance of Six per cent &c. Being a part of a Tract of 136 acres & allowance which was surveyed the 23rd day of October 1737 to John Porter on his Warrant dated the 21st Day of December 1736 Surveyed April 14th 1817.

Rich^d T. Leech Esq^t }
 Surveyor General

P^c Arthur Andrews J^r D.S.

IN TESTIMONY that the above is a copy of the original remaining on file in the Department of Internal Affairs of Pennsylvania, made conformably to an Act of Assembly approved the 16th day of February, 1833, I have hereunto set my Hand and caused the Seal of said Department to be affixed at Harrisburg, this fifteenth day of May 1906

George D. Brown
 Secretary of Internal Affairs.